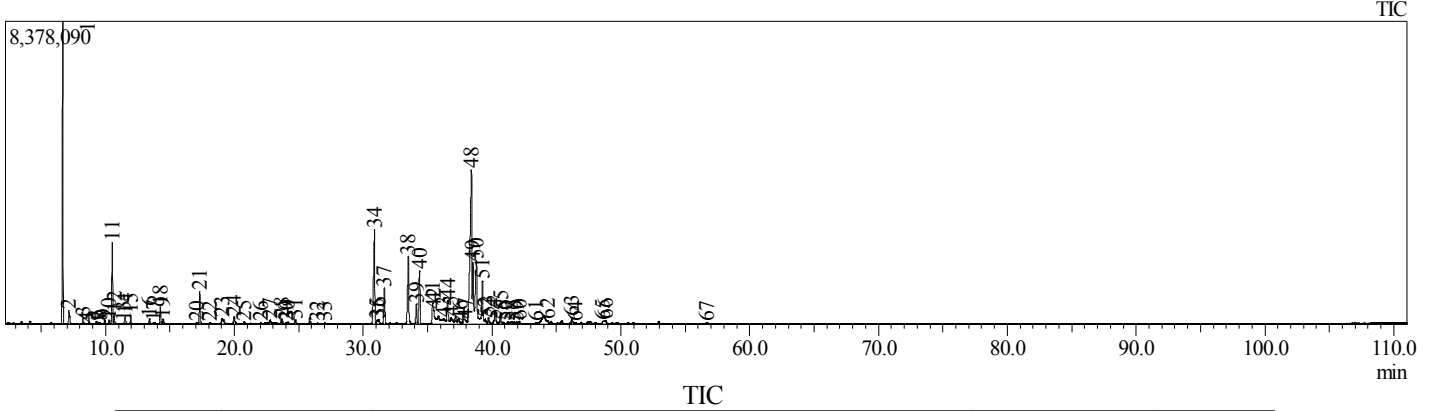


Shemsa Naturals

GC/MS Raporu

Essential oil	Botanical Name	Material	CAS#	Origin	Method
Immortelle oil	Helichrysum italicum	Herbal oil	8023-95-8	TURKEY	Steam Distillation

Chromatogram C:\GCMSsolution\Data\Aroma-5MS\2020\ASLANCAN\ALTINOTU Y.qgd



Peak#	R. Time	Name	Area	Area%
1	6.689	ALPHA PINENE	33621402	17.50
2	7.147	CAMPHENE	1426221	0.74
3	8.250	BETA PINENE	614213	0.32
4	8.485	4-METHYLHEPT-6-EN-3-ONE	46075	0.02
5	8.692	.beta.-Myrcene	168279	0.09
6	9.256	Butanoic acid, 2-methyl-, 2-methylpropyl ester	236945	0.12
7	9.431	l-Phellandrene	144541	0.08
8	9.556	.DELTA.3-Carene	124356	0.06
9	9.918	.ALPHA. TERPINENE	379364	0.20
10	10.262	Cymol	415755	0.22
11	10.524	Limonene	8906471	4.64
12	10.673	EUCALYPTOL (1,8-CINEOLE)	1046057	0.54
13	11.347	.BETA. OCIMENE Y	67513	0.04
14	11.525	Angelate <isobutyl->	896557	0.47
15	11.945	.gamma.-Terpinene	933236	0.49
16	13.399	.ALPHA.-TERPINOLENE	574920	0.30
17	13.711	2-Nonanone (CAS) Methyl heptyl ketone	172934	0.09
18	14.249	Linalool	2065257	1.07
19	14.435	Butyrate < 2-methyl-, 3-methylbutyl->	605425	0.32
20	17.050	3-Methyl-2-butenic acid, hexadecyl ester	145841	0.08
21	17.306	3-Methyl-2-butenic acid, tridecyl ester	4202524	2.19
22	18.085	3-Methyl-2-butenic acid, 4-methylpentyl ester	101644	0.05